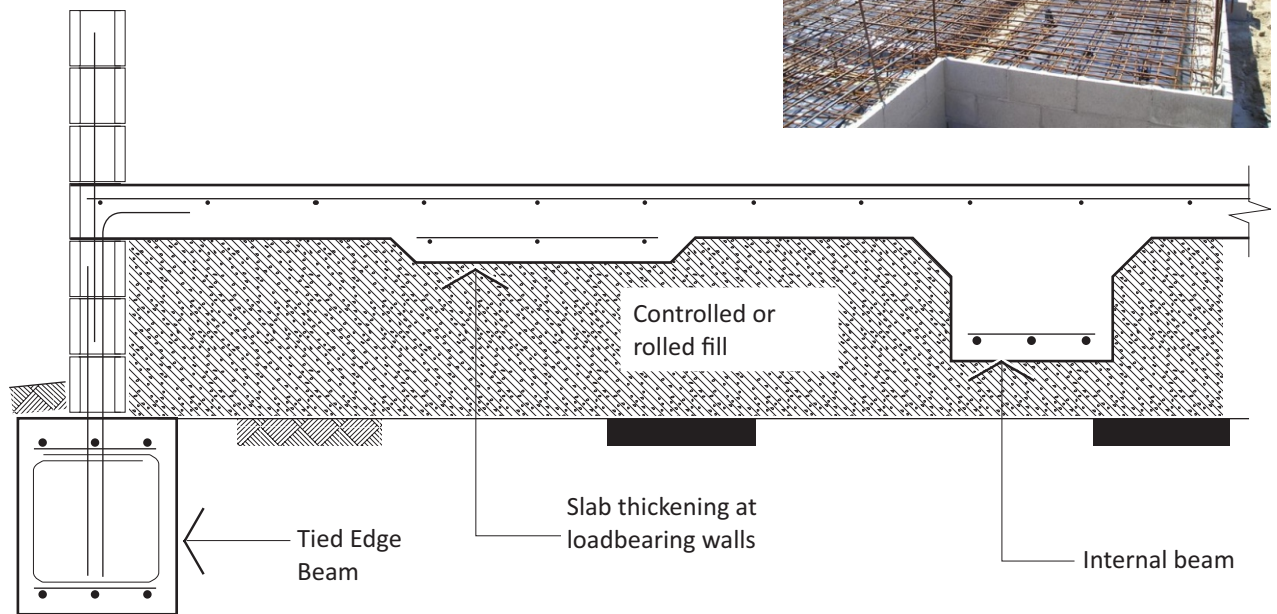


# Concrete Block Tips

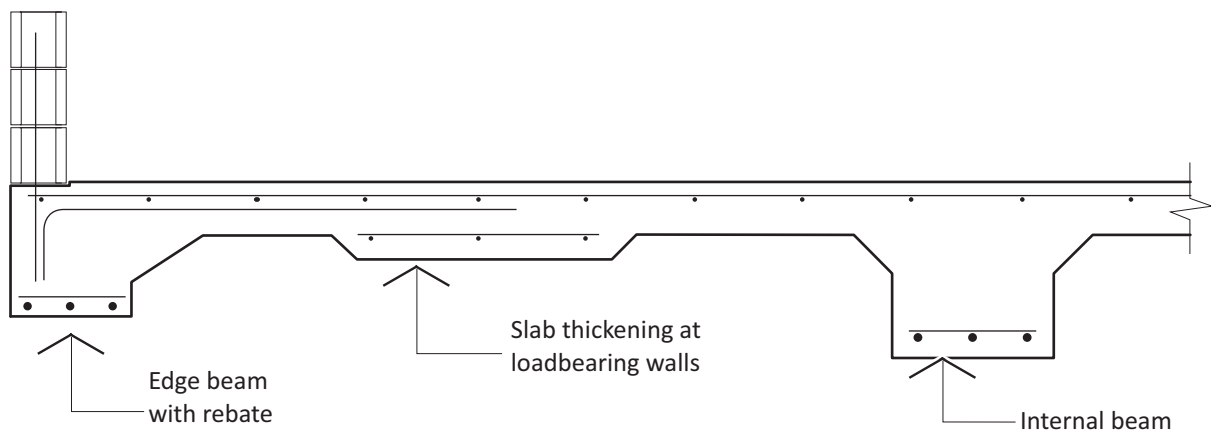


# Slab Options

## Raft Slab

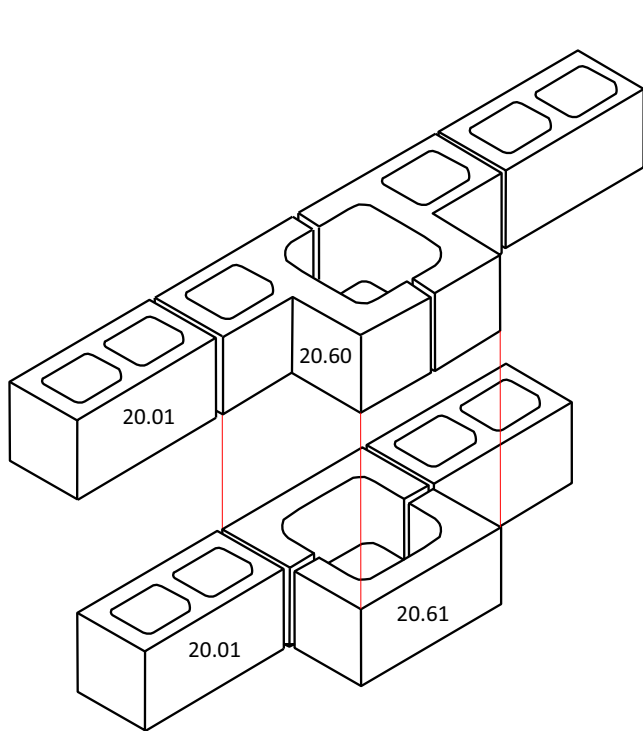


## Waffle Slab/Pre-poured Slab

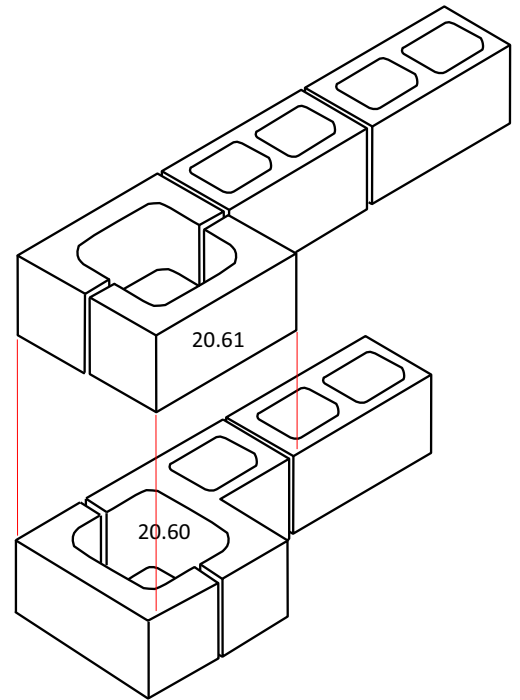


# 20.60/20.61

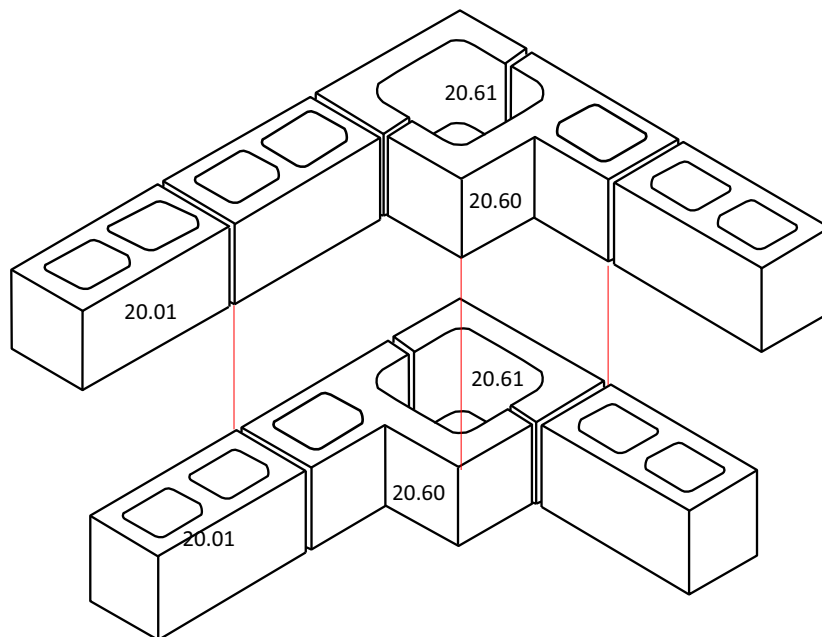
## Engaged Pier



ENGAGED PIER - WITHIN WALL



ENGAGED PIER - END OF WALL

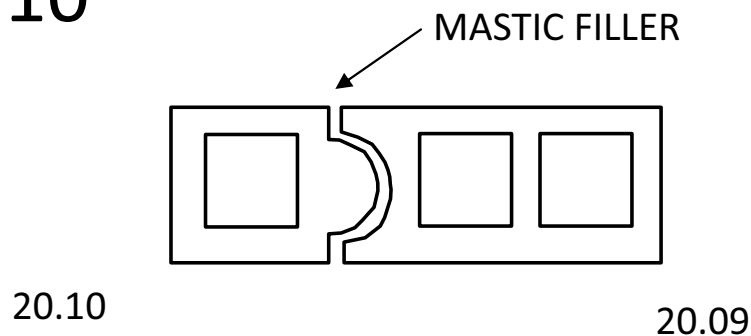


ENGAGED PIER - CORNER

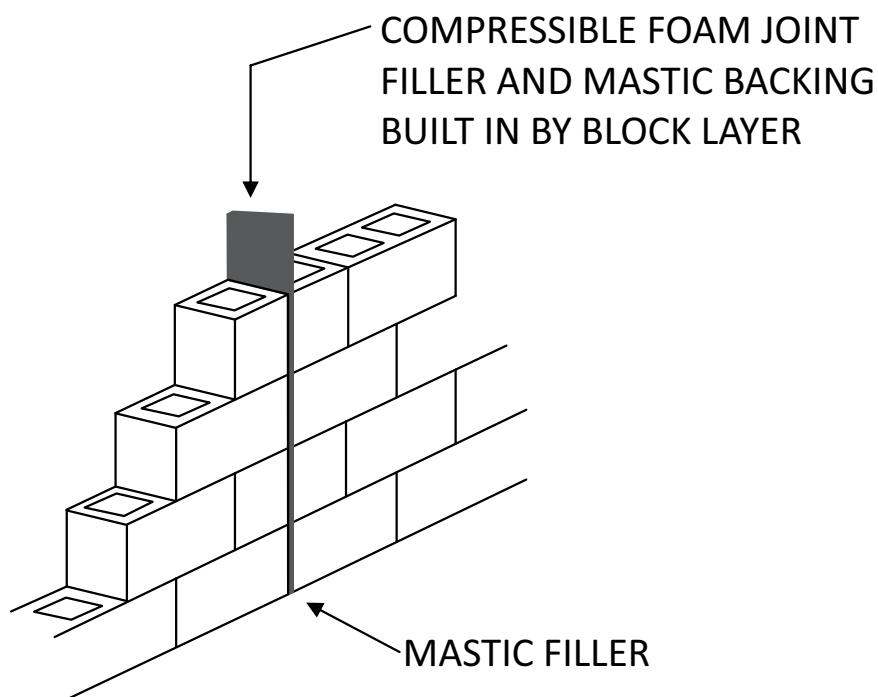
# Control Joints/Articulation Joints

The use of control joints in masonry walling and footings are beneficial where buildings are to be constructed on sites where the soils are classified as being reactive. Movements of footings can cause cracking in walls. Vertical control joints should be built into the masonry walls at points of weakness where there is a potential for cracking. The strategic placement of control joints will limit the position and width of cracks. Control joints should be detailed so as to maintain resistance to moisture penetration, fire, heat and sound. Also known as expansion joints and articulation joints. We recommend control joints every 6 metre on retaining walls and every 8 metre on un-reinforced or partially reinforced masonry.

## 20.09/20.10

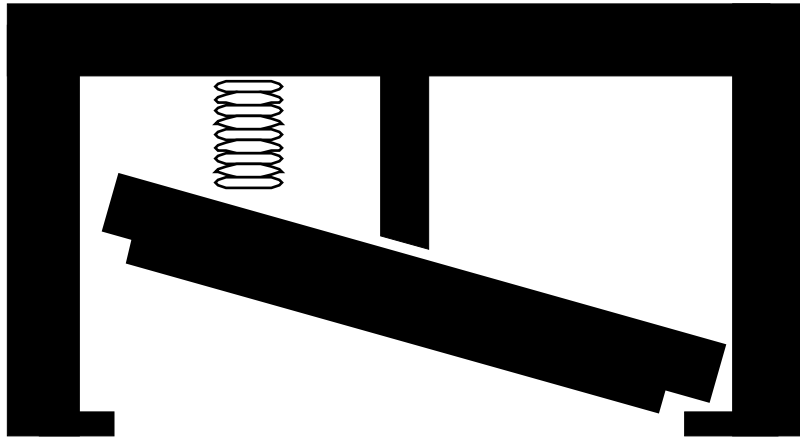


## 20.01/20.03

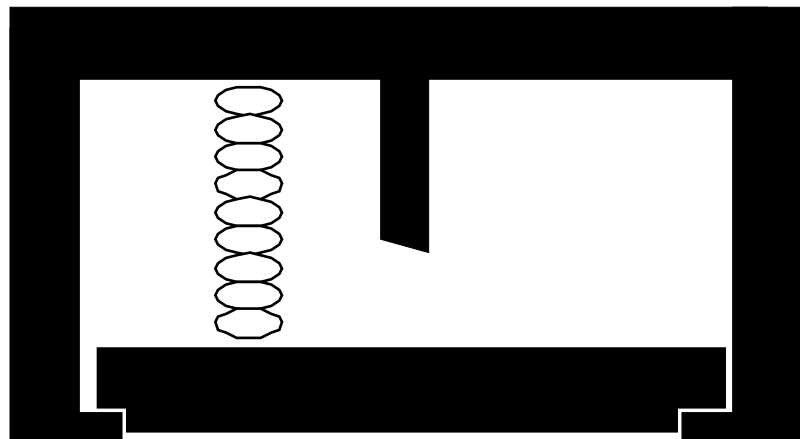


20.45/20.45A/20.45S

## Cleanout Block, Tile & Spring



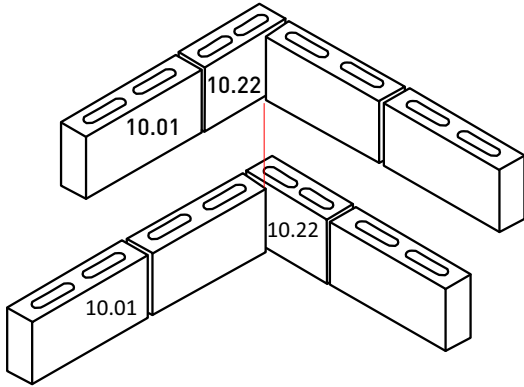
STEP 1



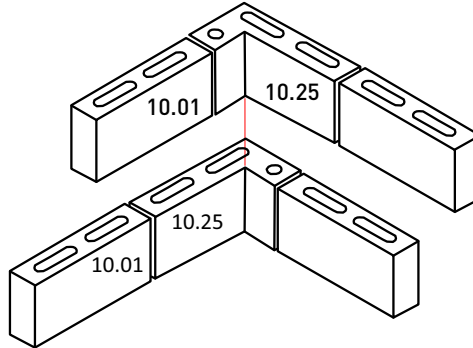
STEP 2



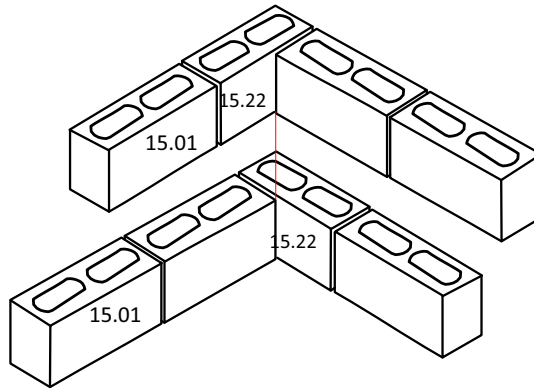
# Blockwork Corner Setouts



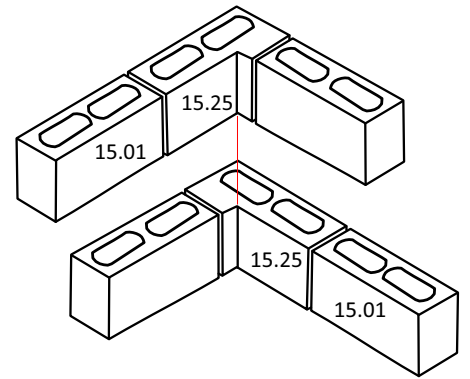
90mm Series CORNER



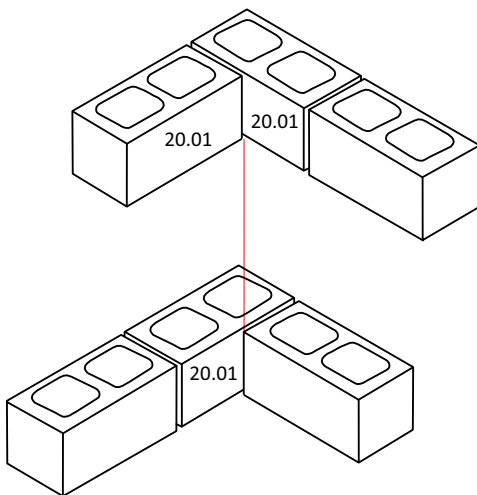
90mm Series CORNER



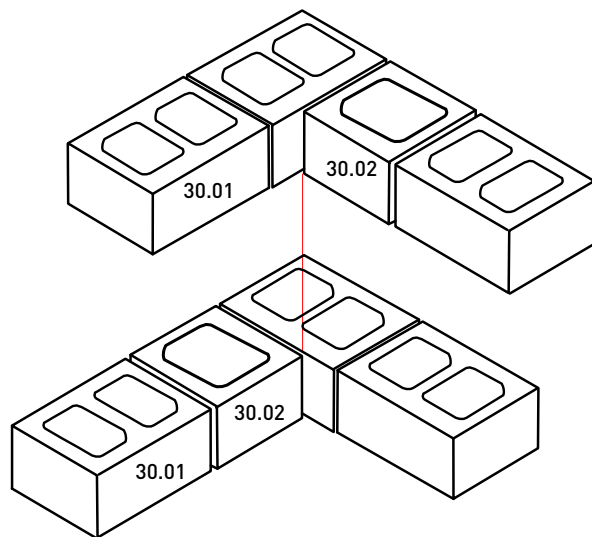
140mm Series CORNER



140mm Series CORNER



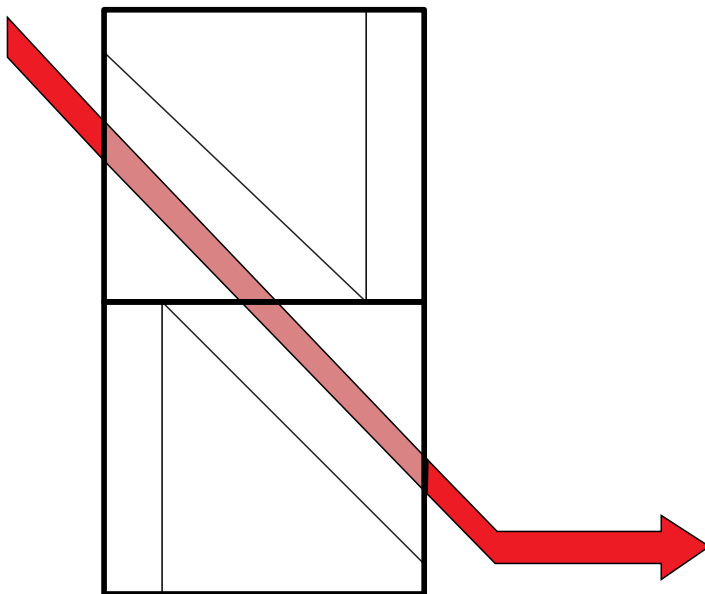
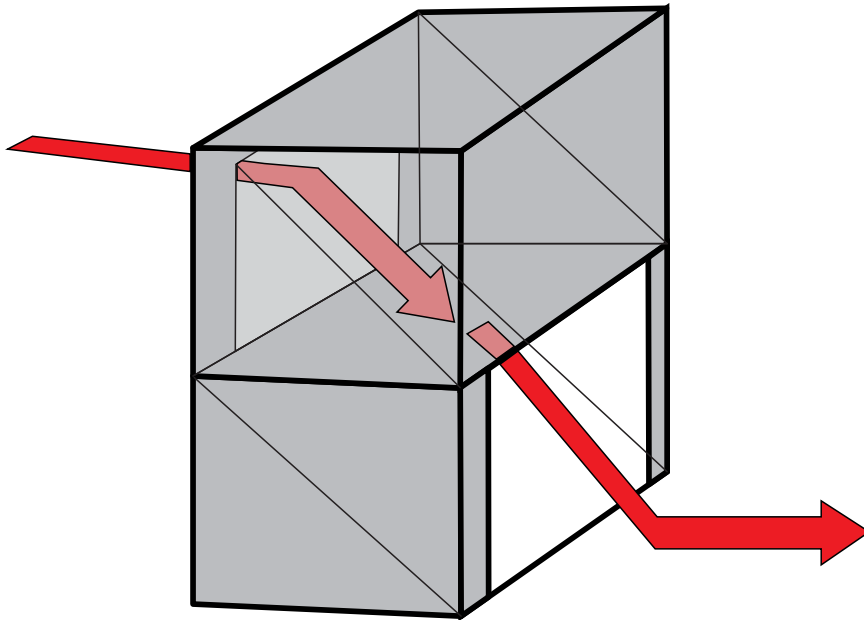
200mm Series CORNER



300mm Series CORNER

15.745

## Louvre Block



## Preparing for a Delivery

Delivery of bricks, blocks and pavers is the is one of the first steps in the construction process. We take pride in efficient effective deliveries as well as working with your builder or contractor. Here are a few simple guidelines to help us place your product where you want it, when you want it!

**1) Estimate Accurately** - We will help estimate your requirements to avoid under ordering.

**2) Not so Fast!** - Have your product delivered to site at least one working day before work starts. Starting work on the delivery day may lead to lost time due to waiting.

**3) Take as many bricks as you can with each delivery.** Ordering a full load ensures priority, express delivery and allows bricklayers and paver layers to blend from multiple open packs.

**4) Our trucks are big!** - We need to know if there are any obstacles such as a deadend or one way streets, height restrictions, weight restrictions, clearways, main roads, proximity to schools or hospitals, etc.

**5) Is the house or lot number prominent?** - Place a 'job sign' on your front boundary to eliminate any confusion.

**6) Site access. If the site is locked, tell us the access times.** - If you require us to enter through neighbouring land, it is your responsibly to get prior written permission. Provide a contact number for someone onsite.

**7) Where do you want them?** - Tell our sales staff where your delivery is to be placed. We need to know before delivery if packs are to be placed around the site, please place signs to indicate your requirements. Our forklifts need at least 2.5m clear width and 2m height clearance.

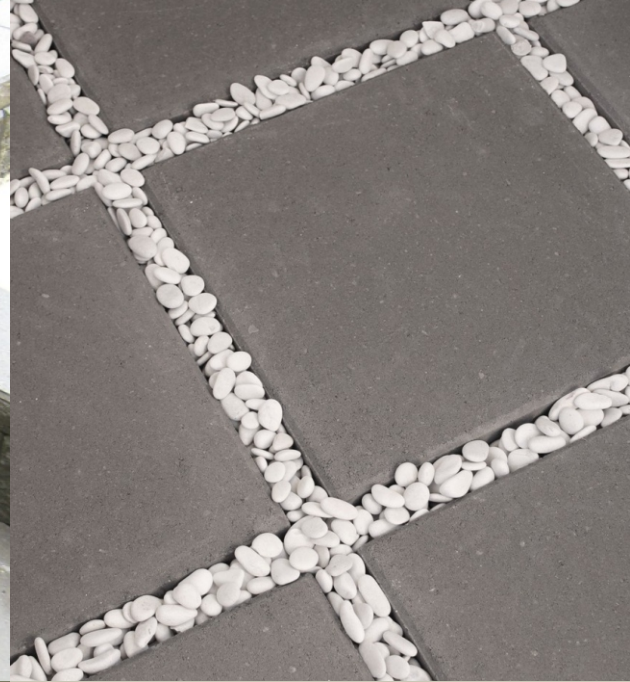
**8) Bricks are heavy.** - A forklift with a full pallet weights about five tones. It's your responsibility to ensure the ground and any path or driveway traversed or crossed can sustain this weight. Stormwater pipes are particularly vulnerable to damage.

**9) Safety first... and last.** - Ensure children are well out of the way and restrain your dog during delivery. We will do our best to place the product to your requirements but the driver has the final say when it comes to safety and possible site damage.

**10) Talk to our sales team about your delivery needs.**







#### **FREE PALLET COLLECTION**

For free pallet collection service call **1300 781 620** or lodge a pick up online at **[www.apexmasonry.com.au](http://www.apexmasonry.com.au)** or drop pallets back to place of purchase.

#### **COLOUR VARIATION**

Due to the changes in raw materials, variation in colour can occur. When ordering your product, order all elements of your project together to reduce the possibility of colour variation. We do not guarantee different batches will be the same colour.



**P 1300 781 620**

**F 07 4121 7170**

**E [sales@apexmasonry.com.au](mailto:sales@apexmasonry.com.au)**

**17 Industrial Ave  
MARYBOROUGH Q 4650**

**[www.apexmasonry.com.au](http://www.apexmasonry.com.au)**