

Edging. Walls. Paving.

Landscaping Product Guide



Contents

EDGING & WALLS

- 6 Easy Edge®
- 8 BoldStone™
- 10 Classic Wall®
- 12 TrendStone®

PAVING

- 16 LeMode Paving Range
- 17 LedaPAVE
- 18 CentroPAVE
- 19 SierraPAVE
- 20 CosmoPAVE
- 21 AdraPAVE
- 22 Easy Pave – Driveway Paving
- 23 Bevel Line – Driveway Paving

HINTS & HOW TO'S

- 26 Easy Edge Estimation & Installation Guide
- 26 BoldStone Estimation & Installation Guide
- 27 Classic Wall Estimation & Installation Guide
- 28 TrendStone Estimation & Installation Guide
- 29 Paving Estimation & Installation Guide
- 30 Paving & Retaining Walls Maintenance

Welcome to Apex Masonry



THE QUEENSLAND LOCALS

Since 1979, Apex Masonry has been producing locally made blocks, pavers and bricks from a mix of high-grade, unique materials sourced from local quarries.

For almost 40 years, our building and landscaping products have set a sound and resilient foundation for residential homes, multi-residential apartments, commercial developments, public spaces and civil projects across South-east Queensland.

EMBRACING INNOVATION

Over the years, our design team and production engineers have achieved a series of practical and clever Australian firsts for our industry.

We listen to our customers and we respond to everyday challenges - with designs that make our blocks, pavers and bricks a little easier to handle and lay for our customers.

ENVIRONMENTALLY FRIENDLY

Apex Masonry takes a proactive approach to investing in sustainable solutions for the built environment.

Where possible, our products are manufactured from recycled waste to reduce environmental impact, improve energy efficiency and generate a greener, more sustainable future for our industry.



Our Customer Service **Promise**

- 1** Respond to all customer enquiries within 30 minutes during business hours.
- 2** Replace any damaged or broken products.
- 3** Always available to answer your calls, even outside business hours
– **24 hours / 7 days.**
- 4** Free delivery on all orders over minimum quantity.
- 5** Next day deliveries to the following regions: Brisbane, Sunshine Coast, Gold Coast, Hervey Bay, Maryborough, Bundaberg and Gympie.



Edging & Walls

Elegant. Regal. Stylish.

Easy Edge

BoldStone

Classic Wall

TrendStone

Easy Edge

Garden Brick Edging

The WEED FREE
garden edging solution.



Easy Edge Charcoal

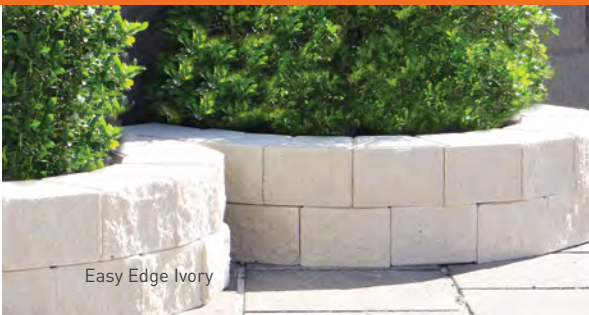
Say goodbye to weeding between your garden brick edging with Apex Masonry's Easy Edge.

Our unique design closes gaps to obstruct weeds from growing between bricks. Quick and easy to install, Easy Edge can be laid along straight or curved walls, for garden borders, tree surrounds or to simply separate your garden from the lawn.

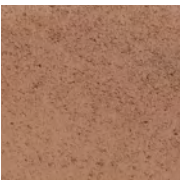
Max. Wall Height (mm)	180
Circle - Min. External Diameter (mm)	820 - 19 units
Suitable For:	
Straight & Curved Walls	✓
Tree Surrounds	✓
Garden & Lawn Edging	✓
Garden Walls	✓

FEATURES

- › Easy to handle
- › Natural Stone look
- › Innovative designs
- › No gaps - WEED FREE
- › Quick and easy to install
- › Only 1 component



COLOURS



Canyon



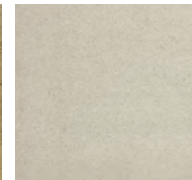
Charcoal



Pebble

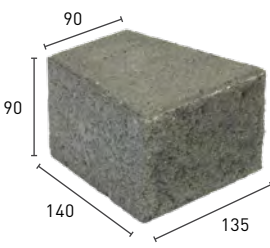


Sandstone



Ivory

SPECIFICATIONS



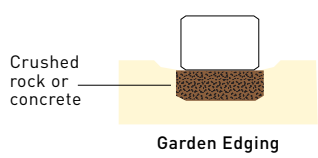
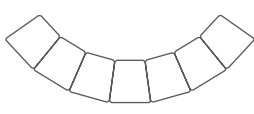
Easy Edge Unit

135 / 90 x 140 / 90mm
 No. per Pallet: 480
 No. per Lm: 9
 Weight per Unit: 3.1kg

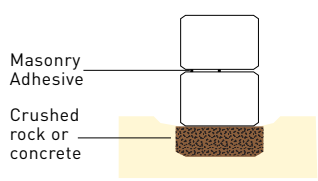
Straight Wall



Curved Wall



Garden Edging



Small Garden Wall

BoldStone™

Garden Wall

The Bold garden wall edging solution.



BoldStone™ Gold Blend

Apex Masonry's BoldStone™ garden wall delivers a mini boulder look giving a unique and flexible solution for straight or curved walls.

The flexibility of BoldStone™ as a garden wall makes it an instant favourite. The tumble process during manufacture results in a natural stone appearance. With it's 2-sided profile the BoldStone™ garden wall allows for a wide range of applications and design options.

Max. Wall Height (mm)

500

Circle - Min. External
Diameter (mm)

1092
- 12 units

Suitable For:

Straight & Curved Walls



Tree Surrounds



Garden & Lawn Edging



Garden Walls



Planter Boxes



FEATURES

- › Garden wall or planter boxes
- › 2 sided stack and go wall
- › Self capping
- › Build curved or straight walls
- › Great for free form walls with minimal cuts
- › Only 1 component

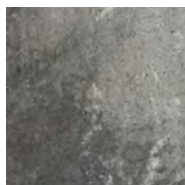


BoldStone™ Slate

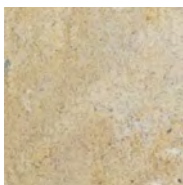


BoldStone™ Pebble

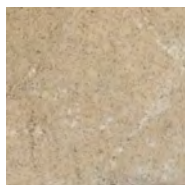
COLOURS



Slate

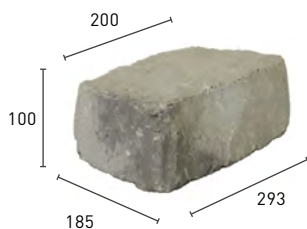


Gold Blend



Pebble

SPECIFICATIONS



BoldStone™ Unit

293 / 200 x 185 x 100mm

No. per Pallet: 144

No. per Lm: 4

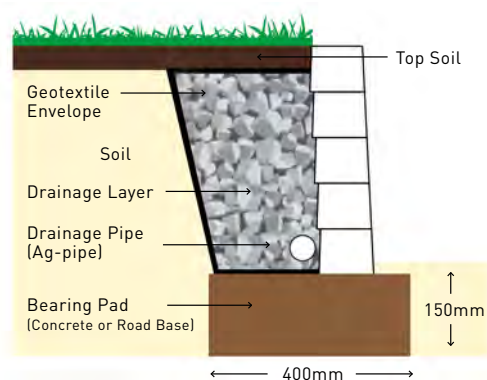
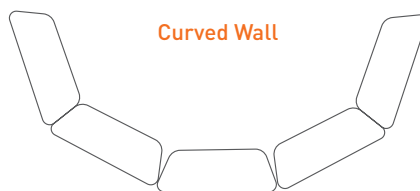
No. Per m²: 40

Weight per Unit: 8.6kg

Straight Wall



Curved Wall



Classic Wall®

Retaining Wall System

A simple retaining wall system with a classic appearance.



Apex Masonry's Classic Wall® Retaining Wall system delivers a simple, functional and flexible solution for straight or curved walls.

For accurate and continuous angling of the wall, every block is manufactured with a small lip for locating the course. Made solid for strength and durability, Classic Wall® is designed to withstand Australia's harsh and ever changing climate conditions.

Max. Wall Height (mm) <small>Greater heights available with engineering</small>	1000
Circle - Min. External Diameter (mm)	1350 – 15 full units
Suitable For:	
Retaining Walls	✓
Straight & Curved Walls	✓
Tree Surrounds	✓
Planter Boxes	✓
Garden Walls & Edges	✓

FEATURES

- › Natural Stone look
- › Quick & easy to install
- › Split on 3 front faces giving a uniform appearance
- › Only 1 component
- › Small lip at rear for easy stacking
- › Manufactured & Tested to Australian Standards



COLOURS



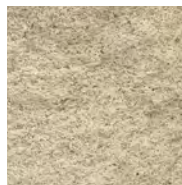
Canyon



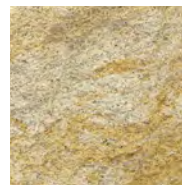
Charcoal



Pebble

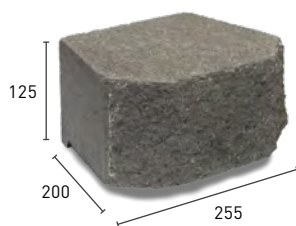


Ivory



Gold Blend

SPECIFICATIONS



Classic Wall® Unit

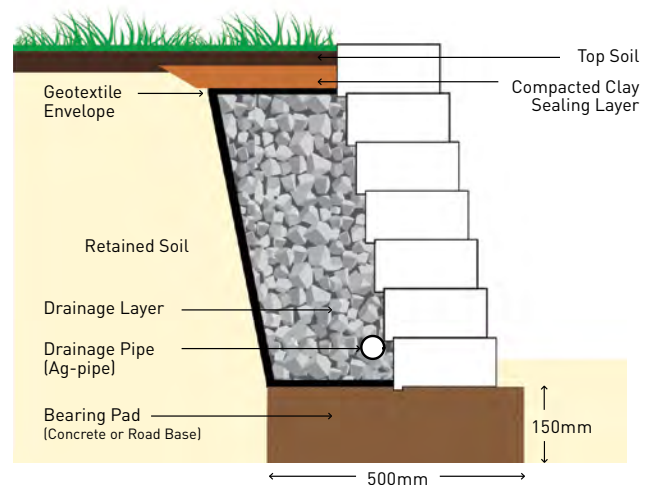
255 x 200 x 125mm

No. Per Pallet: 125

No. Per m²: 31.4

No. Per Lm: 3.92

Weight per Unit: 11.7kg



TrendStone®

Retaining Wall System

Australia's only retaining wall system
with uninterrupted bevelling.



TrendStone® Charcoal

Designed and developed by Apex Masonry, our TrendStone® Retaining Wall system offers Australia's only range of standard and universal corner blocks with four bevelled edges on all block faces.

To guarantee our walls stay in bond, Apex Masonry supplies every block with an indicator for laying consistency and locating keys to ensure blocks remain in bond around curves.

Max. Wall Height (mm)

With Road Base Footing

865

With Concrete Footing

1065

With Specific Engineering

3065

Circle - Min. External
Diameter (mm)

2330
- 16 units

Suitable For:

Retaining Walls



Straight & Curved Walls



Planter Boxes



Garden Walls & Edges



Steps



Courtyards



FEATURES

- › Natural Stone look
- › Universal corner block
 - no left & right corners
- › Only 3 components
- › Quick & easy to install
- › Vertical faced
- › Always remains in bond
- › Bevels on all edges
- › Manufactured & Tested to Australian Standards



TrendStone® Pebble



TrendStone® Ivory

COLOURS – STANDARD RANGE

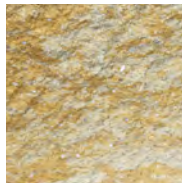


Charcoal

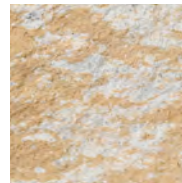


Pebble

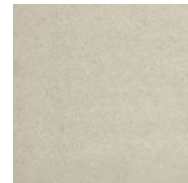
COLOURS – DESIGNER RANGE



Fraser Sand



Fraser Coral



Ivory

SPECIFICATIONS



TrendStone® Wall Unit

400 x 245 x 200mm
No. Per Pallet: 78
No. Per m²: 12.5
Weight per Unit: 22.5kg



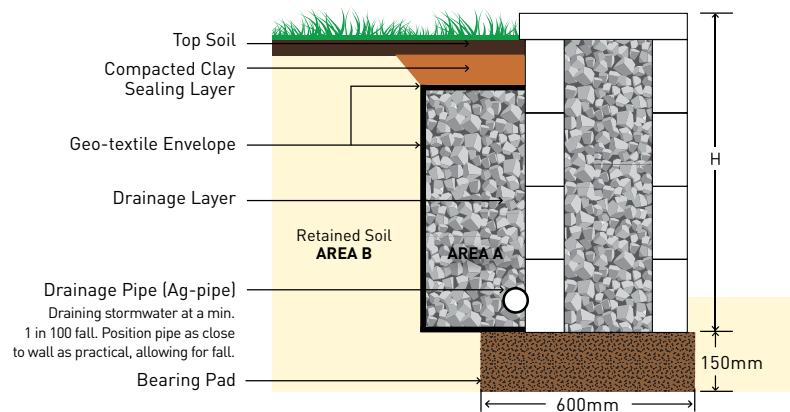
TrendStone® Corner

390 x 190 x 200mm
No. Per Pallet: 75
Weight per Unit: 21.3kg



TrendStone® Cap

400 x 255 x 65mm
No. Per Pallet: 120
No. Per Lm: 2.5
Weight per Unit: 14.5kg



Notes:

Curves - For convex curved walls simply knock the back fin off the block with a hammer. Specific engineering must be drawn up if any site conditions are outside the standard.



TrendStone® & LedaPAVE Ivory



Paving

Smart. Precise. Versatile.

LeMode Paving Range

LedaPAVE

CentroPAVE

SierraPAVE

CosmoPAVE

AdraPAVE

Driveway Paving

Easy Pave

Bevel Line

LeMode® Paving Range

The versatile DIY paver.

Apex Masonry's range of LeMode® bevelled pavers offer affordable quality and style for courtyards, entertaining areas, pathways, patios and pool surrounds.

With sizing in increments of 100mm, LeMode® pavers deliver the ability to mix and match shapes and dimensions across the entire range.

FEATURES

- › Compressive Strength Rated
- › 40mm thick
- › Bevels on four edges
- › Range of dimensions and colours
- › Use in a combination to create patterns

SIZES



LedaPAVE

Page 15

400 x 400 x 40mm
No. per m²: 6.25



CentroPAVE®

Page 16

300 x 300 x 40mm
No. per m²: 11.1



SierraPAVE®

Page 17

400 x 200 x 40mm
No. per m²: 12.5



CosmoPAVE

Page 18

200 x 200 x 40mm
No. per m²: 25



AdraPAVE

Page 19

200 x 100 x 40mm
No. per m²: 50



LedaPAVE Canyon & SierraPAVE® Ivory



LeMode® French Paving Pattern Pebble



LedaPAVE Canyon



LedaPAVE Fraser Coral

Classic large format paver – Ideal for large spaces and stepping stones.

COLOURS



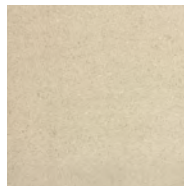
Canyon



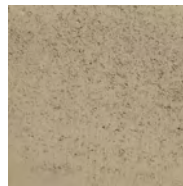
Charcoal



Fraser Coral



Ivory



Pebble



Sandstone

Suitable For:

Courtyards

Entertaining Areas

Pathways

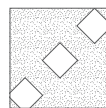
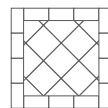
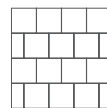
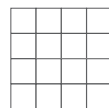
Patios

Pool Surrounds

Stepping Stones



PATTERNS



SPECIFICATIONS



LedaPAVE

400 x 400 x 40mm

No. per pallet: 117

No. per m²: 6.25

Weight per Unit: 13.2kg

LeMode®

CentroPAVE®

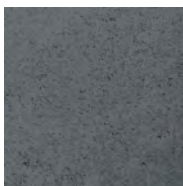


Large format budget paver – Affordable alternative for large format pavers.

COLOURS



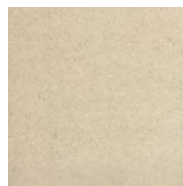
Canyon



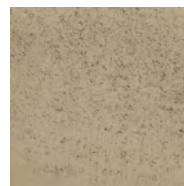
Charcoal



Fraser Coral



Ivory



Pebble



Sandstone

Suitable For:

Courtyards

Entertaining Areas

Pathways

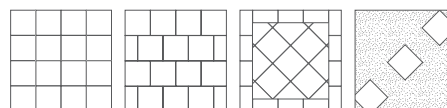
Patios

Pool Surrounds

Stepping Stones



PATTERNS



SPECIFICATIONS



CentroPAVE®

300 x 300 x 40mm

No. per pallet: 192

No. per m²: 11.1

Weight per Unit: 7.7kg

LeMode®

SierraPAVE®

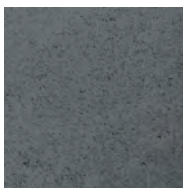


For distinctive patterns – Versatile for creating herringbone and basket weave patterns.

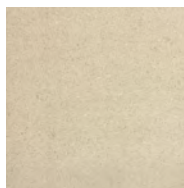
COLOURS



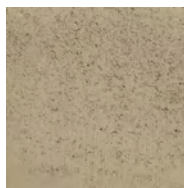
Canyon



Charcoal



Ivory



Pebble



Sandstone

Suitable For:

Courtyards

Entertaining Areas

Pathways

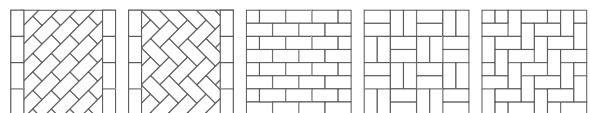
Patios

Pool Surrounds

Stepping Stones



PATTERNS



SPECIFICATIONS



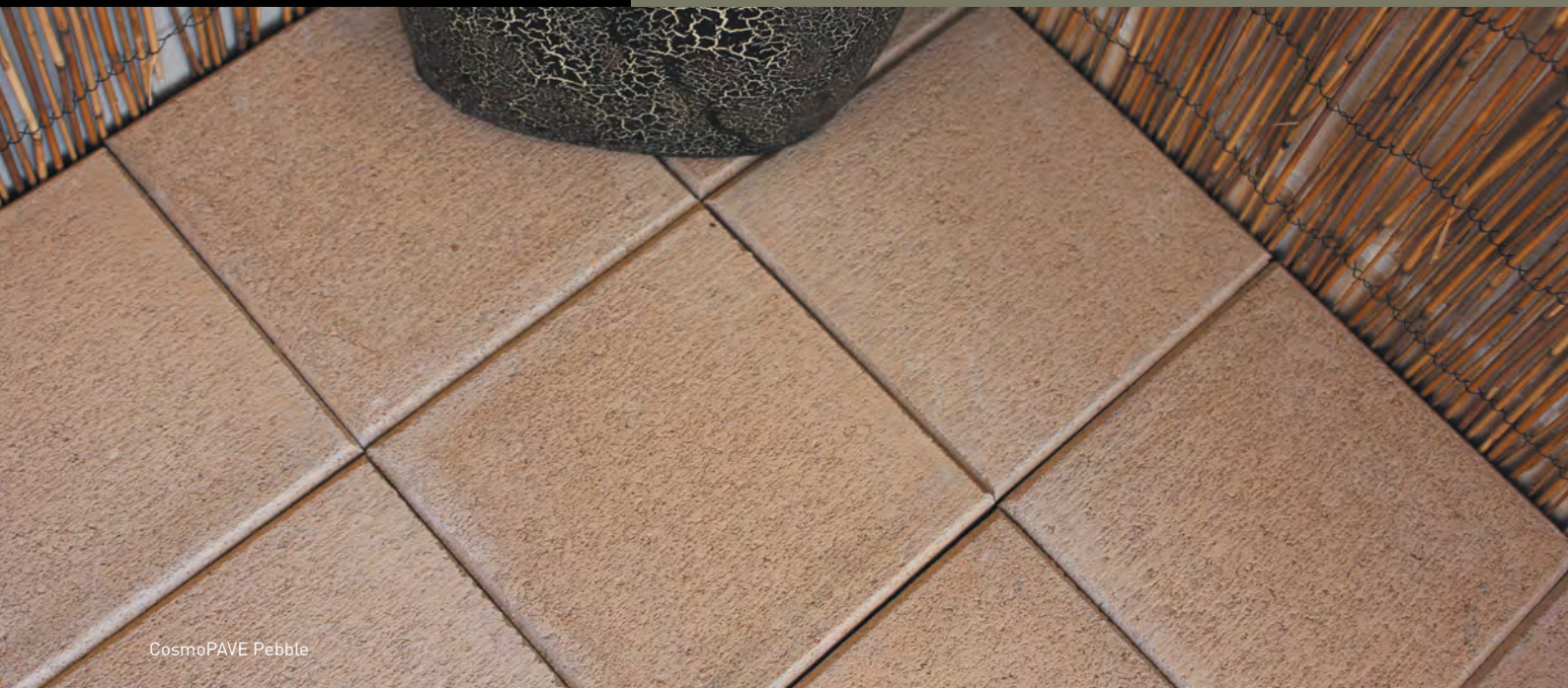
SierraPAVE®

400 x 200 x 40mm

No. per pallet: 252

No. per m²: 12.5

Weight per Unit: 6.9kg



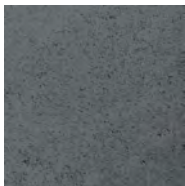
CosmoPAVE Pebble

A traditional courtyard stone – For traditional patterns across smaller areas.

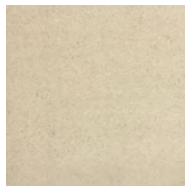
COLOURS



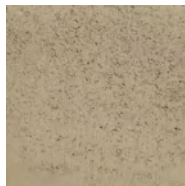
Canyon



Charcoal



Ivory



Pebble



Sandstone

Suitable For:

Courtyards

Entertaining Areas

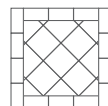
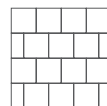
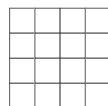
Pathways

Patios

Pool Surrounds



PATTERNS



SPECIFICATIONS



CosmoPAVE

200 x 200 x 40mm

No. per pallet: 504

No. per m²: 25

Weight per Unit: 3.4kg

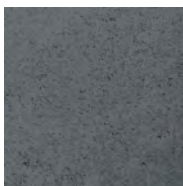


For paving, borders or edging – Small format paver that lends itself to a wide range of patterns.

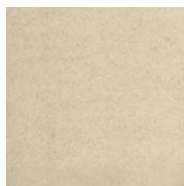
COLOURS



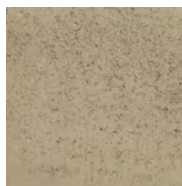
Canyon



Charcoal



Ivory



Pebble



Sandstone

Suitable For:

Mower Strip

Garden Edging

Courtyards

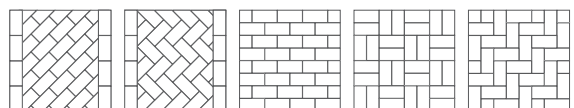
Entertaining Areas

Pathways

Patios



PATTERNS



SPECIFICATIONS



AdraPAVE

200 x 100 x 40mm

No. per pallet: 600

No. per m²: 50

Weight per Unit: 1.7kg

Driveway Paving

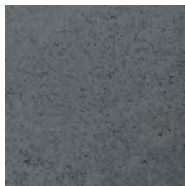
Easy Pave



Easy Pave Charcoal

Designed for domestic driveways – Large format driveway paver.

COLOURS



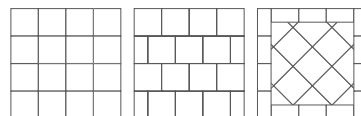
Charcoal

Note:
Other colours are
made to order on
client request

FEATURES

- 50mm thick
- Bevels on four edges
- Manufactured & Tested to Australian Standards

PATTERNS



SPECIFICATIONS



Easy Pave

300 x 300 x 50mm
No. per pallet: 160
No. per m²: 11.1
Weight per Unit: 9.7kg

Suitable For:

Domestic Driveways

Pedestrian Pavements

Public Venues

Courtyards

Entertaining areas

Pathways

Patios



Driveway Paving

Bevel Line



Bevel Line Canyon



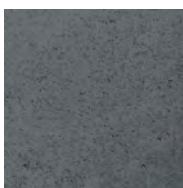
Bevel Line Canyon

Unique and durable driveway paver – Can be used in a number of patterns to create a distinctive cobblestone effect.

COLOURS



Canyon



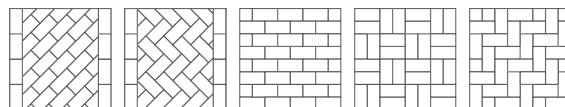
Charcoal

Note:
Other colours are
made to order on
client request

FEATURES

- 53mm thick
- Bevels on two long edges
- Manufactured & Tested to Australian Standards

PATTERNS



SPECIFICATIONS



Bevel Line

230 x 115 x 53mm
No. per pallet: 600
No. per m²: 38
Weight per Unit: 3.0kg

Suitable For:

Domestic Driveways



Pedestrian Pavements



Public Venues



Courtyards



Entertaining Areas



Pathways



Patios



Garden Edging



LeMode®

French Paving Design

The LeMode® French Paving Design combines each of the pavers in the LeMode® Paving Range to create this unique pattern. If you're after a truly designer landscape...the LeMode® French Paving Design is the way to go.

For more information go to www.apexmasonry.com.au/french



A person wearing a dark t-shirt with the 'Apex' logo is kneeling on a construction site. They are using a yellow tape measure to measure a large, light-colored stone slab. The stone is laid out on a dark, textured surface, possibly a prepared base. The person's hands are visible, one holding the tape measure and the other resting on the stone. The background shows a concrete wall and some construction materials.

Hints & How-to's

Plan. Install. Maintain.

Easy Edge Estimation & Installation Guide

BoldStone Estimation & Installation Guide

Classic Wall Estimation & Installation Guide

TrendStone Estimation & Installation Guide

Paving Estimation & Installation Guide

Paving & Retaining Walls Maintenance

Estimation & Installation Guide

Easy Edge

Estimate Quantity Required

1. Measure the perimeter (P) of the area to be edged.
2. To calculate the number of units, multiply the P x number of units per lineal metre (9/Lm).
3. If a double height edge is being created, double the number of units.
4. Order an extra 5% to allow for cuts.

Installation Guide

STEP 1 - DESIGN THE EDGE

Mark out the design on the ground in the location of the edge.

STEP 2 - PREPARE THE BASE

Dig a small trench just deep enough to create a levelling pad for the edge. Fill with crushed rock or concrete and level.

STEP 3 - LAYING THE EDGE

Place Easy Edge bricks onto base, alternating the bricks to create straight edges or laying consecutive bricks the same way to create curves.

STEP 4 - PLACING ADDITIONAL COURSE

Lay the second course of Easy Edge if desired. Secure using masonry adhesive.

Installation Hints

- * For additional strength, fill trench with concrete. Screed to a true level, starting from the lowest point if wall is stepping up. Don't make the concrete mix too wet otherwise the blocks will sink into the mix.
- ** It is essential that this first course of units is placed accurately to string line and levelled using a spirit level.
- *** Make sure that the drainage pipe has roughly a 1 in 100 fall (1cm drop over 1m length of wall).

BoldStone™ Garden Wall

Estimate Quantity Required

1. Measure the length (L) of the wall.
2. To calculate the number of units required, multiply the (L) x number of units per lineal metre (4/Lm).
3. Multiply the number of units per course by how many course/s high the wall will be
4. Order an extra 5% to allow for cuts.

Installation Guide

STEP 1 - PREPARING THE BASE

Mark out ground and dig a trench 400mm wide and 130mm deep. Fill trench with road base and compact. Cover road base with 25mm sharp sand or crushed blue metal. Screed to a true level. *

STEP 2 - LAYING FIRST COURSE

Place wall unit onto prepared base. Make sure 50mm of first block is below finished ground level. **

STEP 3 - PLACING THE DRAIN

Place agricultural drainage pipe (Ag-pipe) behind first course of wall on a bed of drainage material. Outlet the drain through wall at every low point, every 20 metres and around ends of wall. ***

STEP 4 - PLACING ADDITIONAL COURSE

Continue laying subsequent courses following same procedure as first course. Place each course in running bond with course below (i.e. with the vertical joints from the first course units halfway along second course units). It is recommended to use liquid nails/masonry adhesive to glue each course together.

STEP 5 - BACKFILLING

Back fill behind the wall using 10-20mm drainage material, maintaining a high compaction rate.

STEP 6 - SURFACE DRAINAGE LAYER

Place 100 - 150mm of clay impermeable layer (or similar) on top of the wall fill to divert water away from the face of the wall.

Estimation & Installation Guide

Classic Wall®

Estimate Quantity Required

1. Measure the length (L) and height (H) of the wall.
2. Multiply the L x H to work out the square metreage area (m²) of the wall.
3. Multiply the m² of the wall by the number of units in a m² (31.4/m²).
4. Order an extra 5% to allow for cuts.

Installation Guide

STEP 1 - PREPARING THE BASE

Mark out ground and dig a trench 500mm wide and 150mm deep. Fill trench with road base and compact. Cover road base with 25mm sharp sand or crushed blue metal. Screed to a true level.*

STEP 2 - LAYING FIRST COURSE

Place wall unit onto prepared base. Make sure 50mm of first block is below finished ground level.**

STEP 3 - PLACING THE DRAIN

Place agricultural drainage pipe (Ag-pipe) behind first course of wall on a bed of drainage material. Outlet the drain through wall at every low point, every 20 metres and around ends of wall.***

STEP 4 - PLACING ADDITIONAL COURSES

Continue laying subsequent courses following same procedure as first course. Place each course in running bond with course below (i.e. with the vertical joints from the first course units halfway along second course units).

STEP 5 - BACKFILLING

Back fill behind the wall using 10-20mm drainage material, maintaining a high compaction rate.

STEP 6 - LAYING FINAL COURSE

Once backfilling and cleaning is complete, fix final course of Classic Wall® into place using masonry adhesive.

STEP 7 - SURFACE DRAINAGE LAYER

Place 100-150mm of clay impermeable layer (or similar) on top of the wall fill to divert water away from the face of the wall.



Estimation & Installation Guide

TrendStone®

Estimate Quantity Required

1. Measure the length (L) and height (H) of the wall.
2. To calculate the number of wall units, multiply the $L \times H \times \text{number of units per m}^2$ (12.5/m²).
3. For capping units, multiply L x the number of units per lineal metre (2.5/Lm).
4. For corner units, add up number of internal & external corners required and multiply it by the number of courses high the wall is.
5. Order an extra 5% of all items to allow for cuts.

Notes:

Core fill Requirements - 0.85m³ of aggregate or No Fines concrete fills 100 blocks. 0.106m³ of aggregate or No Fines Concrete fills 1m² blocks.

Installation Guide

STEP 1 - PREPARING THE BASE

Mark out the ground using stakes and a string line or by marking a line on the ground with spray paint. Dig a trench approximately 600mm wide and no less than 150mm deep.

For Walls Up to 865mm High

Fill trench with road base and compact. Cover road base with approximately 25mm of sharp sand or crushed blue metal. Screed to a true level, starting from the lowest point if wall is stepping up.

For Walls Up to 1065mm High

Fill trench with concrete. Screed to a true level, starting from the lowest point if wall is stepping up. **TIP: Don't make the concrete mix too wet otherwise the blocks will sink into the mix.**

For Walls Over 1065mm High

Obtain Engineers specifications.

STEP 2 - LAYING FIRST COURSE

Place wall unit onto prepared base. It is essential that this first course of units is placed accurately to string line and levelled using a spirit level. For walls up to 1 metre high, make sure 100mm of the first block course is below the finished ground level.

STEP 3 - PLACING THE DRAIN

Place an agricultural drainage pipe with a geotextile sock (Ag-pipe) behind the first course of the wall on a bed of drainage material. Spread the drainage material such that the pipe has roughly a 1 in 100 fall (1cm drop over 1m length of wall).

Outlet the drain through the wall at every low point, at every 20 metres and around the ends of the wall, to your storm water system.

STEP 4 - PLACING ADDITIONAL COURSES

Clean debris from top of unit to ensure that the next unit will sit neatly. Place guide members in groove with pins facing upward and forward. It is important that all guide members are in place. Continue laying the subsequent courses following the same procedure as the first course. Place each course in running bond with course below (i.e. with the vertical joints from the first course units halfway along second course units) using locating pointer as a guide.

STEP 5 - BACKFILLING & COREFILLING

Fill all the cores of the blocks with 10-20mm clean, free drainage material. Once all cores have been filled, place geo-textile fabric into place as per diagram on page 11 and back fill behind the wall using the same 10-20mm clean, free drainage material. Maintain high compaction rate on backfill material. Do not use soft or wet clay as backfill material.

For additional strength, No-Fines Concrete can be used to core fill and backfill the wall instead of the 10-20mm aggregate.

STEP 6 - LAYING CAPPING UNITS

Once backfilling and cleaning is complete, place TrendStone® capping units in running bond, fixing them to top of wall using adhesive. For domestic wall installations, a waterproof construction adhesive is recommended. For high use areas, a 2-part epoxy is preferred.

STEP 7 - SURFACE DRAINAGE LAYER

Care should be taken where possible to divert water away from the face of the wall. If surface water cannot be naturally drained away from top of wall, place 100 - 150mm of clay impermeable layer (or similar) on top of back fill. If soil is used on top of this backfill, a layer of geo-textile fabric must be used to stop any soil filtering down through the drainage layer to back of wall.

Estimation & Installation Guide

Estimate Quantity Required

Rectangular areas

1. Measure the length (L) and width (W) of the area to be paved.
2. Multiply the L x W to work out the area (m²).
3. Multiply the area by the number of units in a m² (refer to product details).
4. Order up to 10% extra to allow for wastage such as cuts & breakages.

Triangular areas

1. Measure the base width (B) and length (L) of the triangular area to be paved.
2. Multiply the B x L and divide by 2 ($B \times L \div 2$) to work out the area (m²).

Installation Guide

STEP 1 - PREPARE THE SITE

Prepare an area larger than the paved area required. Clear area of all vegetation, bark and soft soils. Check that finished height is not going to be higher than a nearby door opening.

STEP 2 - LAY A FOUNDATION

Lay certified road base and compact with a plate compactor. **For walkways:** Spread road base to a depth of 50mm to 80mm. **For driveways:** Spread road base around the entire area to a total depth of 150 to 200mm in 50mm layers, compacting between the layers. If laying on clay or fine sand use geo-fabric first.

STEP 3 - BEDDING SAND

Spread bedding sand evenly over the area to a depth of 40mm. Use a washed medium or coarse sand. Level and compact this bedding sand layer.

STEP 4 - SCREEDING BEDDING SAND

Start by placing a screeding board at one edge of the area to be paved (e.g. the base of a wall) to create a height reference mark. Lay the screeding board at 90° to the reference mark, to create level for the screeding rails. Allow for a slight fall away so that water will run off the pavers toward the lawn or garden. Lay the screed rails where you have just prepared, parallel to each other and a screeding board's distance apart. Place the screed on the rails and using a sawing motion pull the screed towards you. For large areas repeat this process.

STEP 5 - START PAVING

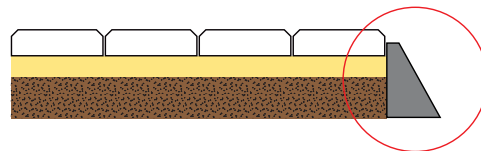
Set up a string line to suit the pattern you are going to lay and start laying along the longest straight edge of the area. Continue to lay pavers until the entire area is paved.

STEP 6 - EDGING

Remove all excess road base and sand from around the edge of the paved area. To keep pavers in a fixed position, an edge restraint must be installed. See diagram examples for two options.

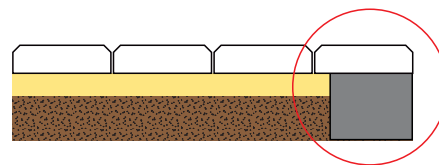
EDGE RESTRAINT: EXAMPLE 1

Using the left-over sand, mix with cement at a 4:1 ratio. Smooth the concrete mix on an angle up against the edge of the paved area.



EDGE RESTRAINT: EXAMPLE 2

Remove the paving along the edge of the area and create a concrete beam approximately 100mm wide at the edge of the paved area. Sprinkle the beam with neat cement and lay the edge pavers on the beam. This will lock the pavers to the beam giving you a high-quality edge ideal for the garden or grass to grow up to.



STEP 7 - SWEEP IN THE SAND

Always use kiln dried sharp gap sand. Sweep the gap sand over the dry paving, ensuring that all the gaps are filled.

STEP 8 - PACK IT IN

For pavers with a thickness of 40mm the surface can be hand compacted with a piece of timber and a rubber mallet. Pavers with a thickness of 50mm or greater need to be compacted with a plate compactor. Always remember to use a rubber mat or carpet under the plate compactor to prevent damage to the pavers.

Paving & Retaining Walls

Maintenance

Pre-sealing admixtures are incorporated during the manufacture of these products. These admixtures significantly enhance waterproofing and assist in maintaining the appearance of your blocks and pavers for years to come. To ensure that your blocks and pavers are kept looking clean and fresh we recommend that you pay attention to the following instructions.

PAVERS

- Sweep frequently with a bristled broom to keep area free of debris.
- It is recommended sealing concrete pavers after installation. Sealing products recommended are from Shalex Industries - www.shalex.com.au
- If constructing in and around the paved area, cover the pavers to protect against damage.
- Protect your pavers against possible staining from mortar, oxides, cement and rust.
- Do not use acid to clean pavers.
- Avoid using high pressure cleaning apparatus to clean pavers.
- Joint maintenance - Any loss of sand in the joints must be promptly rectified. Repeat STEP 7 in 'PAVERS Installation Guide'.
- Control weeds by periodic applications of weedicide. Best results will be achieved in dry weather conditions.

Routine cleaning will keep your project in good condition, however should staining occur follow these simple steps:

- Identify type of stain carefully before taking action.
- Assess the efficacy of the cleaning compound or procedure by a trial on a small inconspicuous area of the pavement.
- Remove the worst stains first.
- Where abrasives, detergents or chemicals are used, ensure that all residues are immediately removed.
- Do not use acid to clean pavers.

IMPORTANT INFORMATION

Light coloured pavers emphasise tyre marks and oil spills on the driveway. It must be accepted that these products will need more maintenance if their overall appearance is to be maintained.

RETAINING WALLS

- If constructing in and around the area, cover the wall to protect against damage.
- Protect your retaining wall against possible staining from mortar, oxides, cement and rust.
- Do not use acid to clean retaining wall.

Routine cleaning will keep your project in good condition, however should mould growth occur follow these simple steps:

Initially try wet brush cleaning with warm water and household detergent or high pressure water blasting (ONLY use fan jet) with or without detergent. If other methods are unsuccessful, use ordinary bleach diluted down as per specifications then scrub with stiff brush. Make sure this area is flushed down with water.

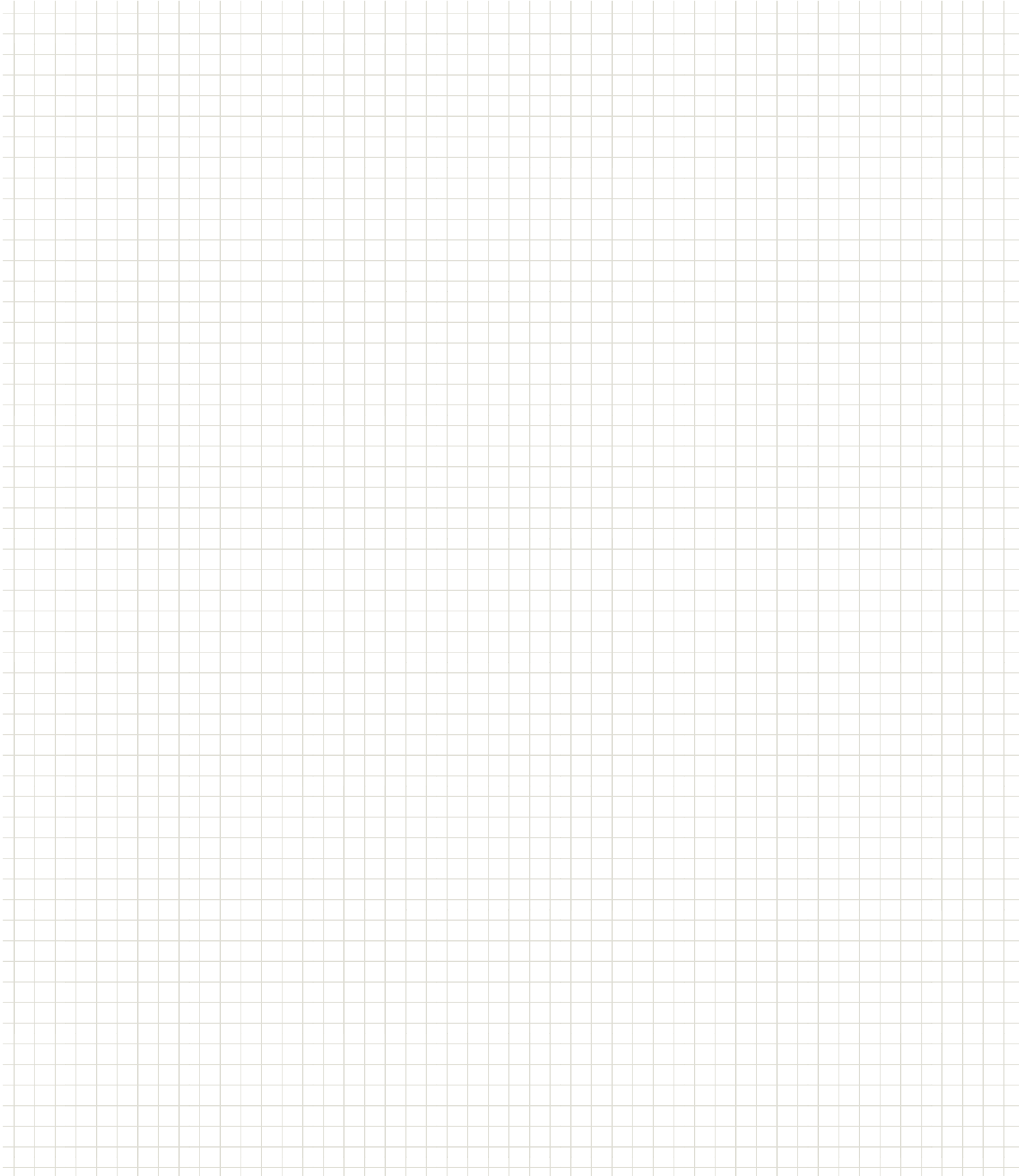
NOTE: Test a small, inconspicuous area before cleaning the entire wall, to ensure solution doesn't damage wall.

EFFLORESCENCE

The most common cause of concrete product discolouration is efflorescence. It is a transitory occurrence and will usually disappear in time under abrasion by pedestrian and vehicular traffic and general weathering. Efflorescence does not affect the structural integrity or strength of the product. Efflorescence may be removed by stiff brush or the application of Anti-Eff (Environex International product) – Read suppliers instructions before use.

PROBLEM	SUGGESTED CLEANING METHOD
Efflorescence (White powdery deposit)	Use Environex Anti-EF or equivalent as per manufactures recommendation.
Leaves, bark, algae, food and wine stains	Use 10 parts water to 1 part bleach, then wash thoroughly down.
Chewing gum	Freeze with dry ice and remove with a spatula.
Ivy suckers	Apply a heat gun to the suckers until they go hard. Allow them to cool and dry, then scrub them off with a stiff bristled broom.

Notes & Sketches





TrendStone® Charcoal & French LeMode Pattern Ivory

FREE PALLET COLLECTION

For free pallet collection service call **1300 781 620** or lodge a pick up online at **www.apexmasonry.com.au** or drop pallets back to place of purchase.



P 1300 781 620

F 07 4121 7170

E sales@apexmasonry.com.au

**17 Industrial Avenue
Maryborough Q 4650**

apexmasonry.com.au

TrendStone®, BoldStone™, LeMode®, Sierra®, Centro® and Classic Wall® are registered Trademarks.

COLOUR VARIATION

Due to the changes in raw material, variation in colour can occur. When ordering your product, order all products of your project together to reduce the possibility of colour variation. We do not guarantee different batches will be the same colour.

EFFLORESCENCE

Efflorescence (a salty deposit) is a natural occurrence in masonry products. Efflorescence does not affect the structural integrity of the product and will usually diminish and disappear in the course of time as the product is exposed to the elements. No responsibility will be accepted for the occurrence of efflorescence.

CLAIMS

Claims must be reported within 72 hours of delivery. No claims will be accepted once product has been installed. Please contact the store where goods were purchased to report any concerns regarding product delivery or quality.

Minimum order quantities apply to Made to Order colours.