

How to Pave French LeMode Paving Pattern



How to Pave the French LeMode Paving Pattern

ESTIMATING QUANTITY OF PAVERS REQUIRED

Rectangular areas

1. Measure the length (L) and width (W) of the area to be paved.
2. Multiply the L x W to work out the area (m²).

Triangular areas

1. Measure the length (L) and base width (B) of the triangular area to be paved.
2. Multiply the B x L and divide by 2 (B x L x ½) to work out the area (m²).

Odd Shaped areas

1. Break the area down into smaller shapes and calculate individual areas.

3. Enter the square meterage (m²) into our handy French Pattern Calculator.
4. Order up to 5% extra to allow for wastage from cuts.

Tip: The calculator determines the correct number of pavers to cover the area that you have provided. However, we recommend using our handy Working Out Sheets to determine exactly where to lay the pavers.

ESTIMATING OTHER MATERIALS REQUIRED

BOTTOM LAYER: ROAD BASE

A base layer of road base will create a firm foundation for the paving. Spread road base around the entire area to a total depth of 50mm to 80mm. 1m³ will cover 18m² when compacted to 50mm.

_____ m² x depth of road base required ÷ 0.9 = _____ m³ of ROAD BASE

MIDDLE LAYER: BEDDING SAND

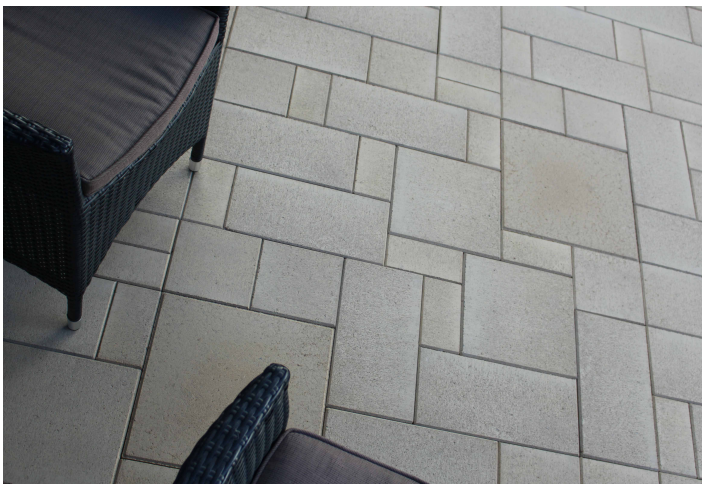
Spread bedding sand evenly over the area to a depth of 40mm. 1m³ will cover approximately 25m² to a depth of 40mm. The most common bedding sand type used is washed medium or coarse sand.

_____ m² (area) x 0.04 = _____ m³ of BEDDING SAND

TOP LAYER: PAVER JOINT FILLING SAND

When you lay pavers, it is recommended that joint fill sand is broomed into the gaps. A 20kg bag should cover approximately 25m². Always use kiln dried sharp gap sand.

_____ m² (area) ÷ 25 = approx. _____ 20kg bags of PAVER JOINT FILLING SAND



How to Pave the French LeMode Paving Pattern

INSTALLATION GUIDE

STEP 1 - PREPARE THE SITE

Prepare an area larger than the paved area required. Clear area of all vegetation, bark and soft soils. Check that finished height is not going to be higher than a nearby door opening.

STEP 2 - LAY A FOUNDATION

Lay certified road base and spread to a depth of 50mm to 80mm. Compact with a plate compactor. If the road base is very dry add a little water.

STEP 3 - BEDDING SAND

Spread a 30-40mm layer of bedding sand over the prepared area. Level and compact this layer. Remember to use a washed medium or coarse bedding sand.

STEP 4 - SCREEDING BEDDING SAND

Using a screed, level an area to start paving from. For larger areas, break them up into smaller areas that are easier to manage. Lay a screed rail on your prepared area and using it as a guide, screed at 90° allowing for a slight fall so the water will run away from your house toward the lawn or garden. Lay the screed rails where you have just prepared. Place the screed on the rails and using a sawing motion pull the screed towards you. For larger areas repeat this process.

STEP 5 - START PAVING

Set up a string line to suit the pattern you are going to lay and start laying the pattern in one corner of the area, beginning with a LedaPAVE (400x400x40mm). After laying the first module, use our handy Working Out Sheets to determine which pavers to lay next.

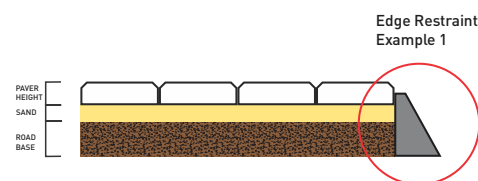
Tip: Start by laying the LedaPAVE (400x400x40mm) in the corner of prepared area as this will make it easier to follow the pattern.

STEP 6 - EDGING

Unless your paving is getting laid up against a house or slab, an edge restraint must be installed. See diagram example for two options.

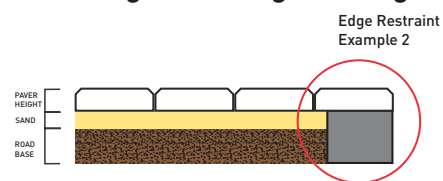
EDGE RESTRAINT: EXAMPLE 1

Using the left-over sand, mix with cement at a 4:1 ratio.



EDGE RESTRAINT: EXAMPLE 2

Create a cement beam approx. 100mm in from the edge of the paver. Sprinkle the beam with neat cement and lay the paver on the beam. This will lock the paver to the beam giving you a high-quality edge ideal for the garden or grass to grow up to.

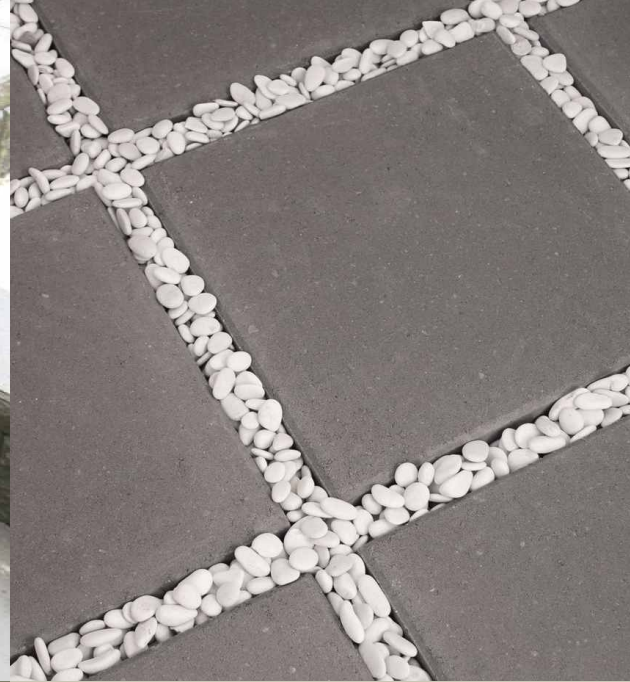


STEP 7 - SWEEP IN THE SAND

Make sure the paving is dry then sweep the gap sand over the paving, ensuring that all the little gaps are filled. Remember to use a kiln dried sharp gap sand.

STEP 8 - PACK IT IN

The paving must be compacted – this can be done by hand by using a block of timber and a rubber mallet.



FREE PALLET COLLECTION

For free pallet collection service call **1300 781 620** or lodge a pick up online at www.apexmasonry.com.au or drop pallets back to place of purchase.

COLOUR VARIATION

Due to the changes in raw materials, variation in colour can occur. When ordering your product, order all elements of your project together to reduce the possibility of colour variation. We do not guarantee different batches will be the same colour.



P 1300 781 620

F 07 4121 7170

E sales@apexmasonry.com.au

17 Industrial Ave
MARYBOROUGH Q 4650

www.apexmasonry.com.au